

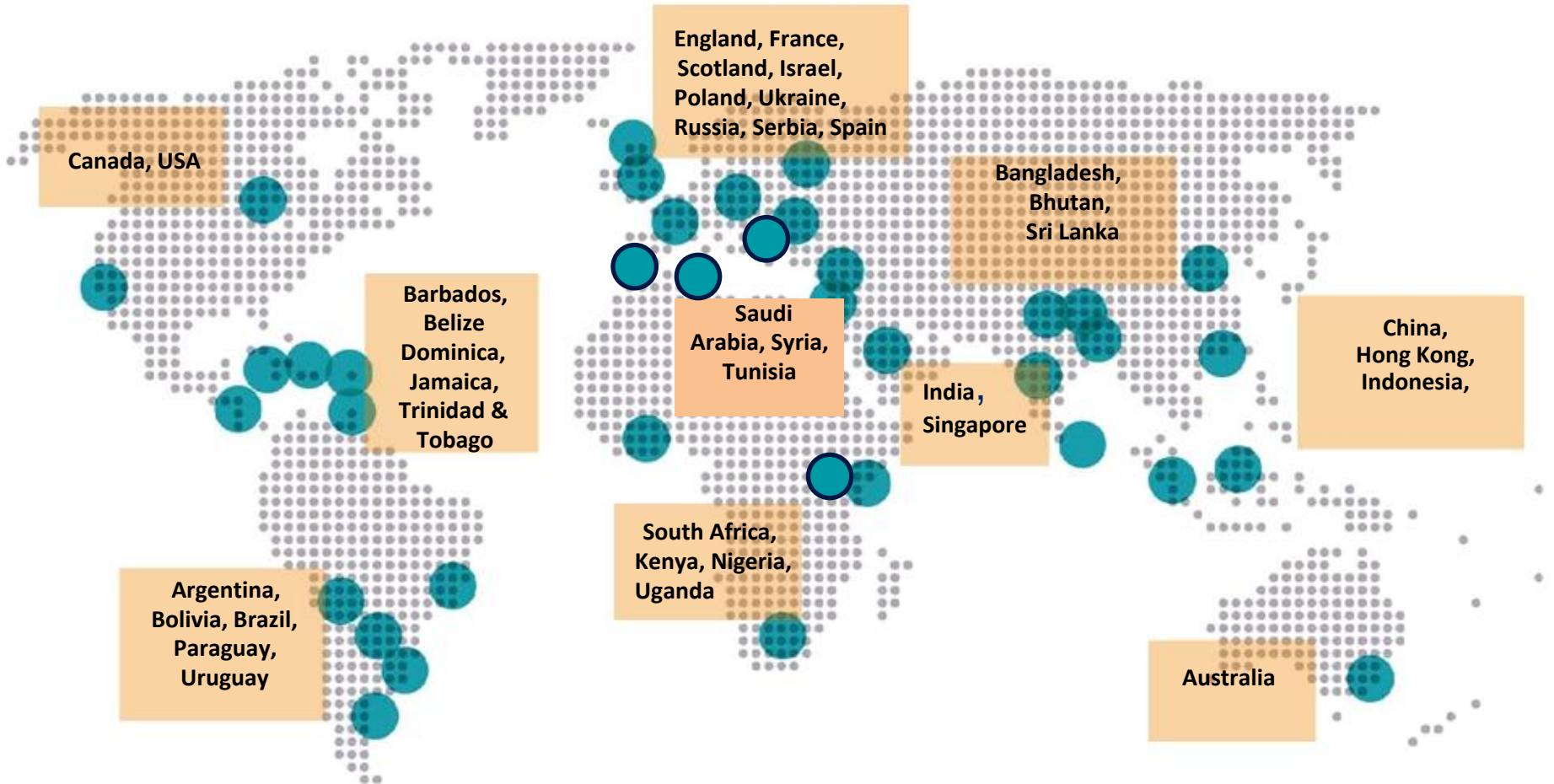
Introduction to Youth Business International

24th January 2013

Dianne Cornes, Director, Network Expansion

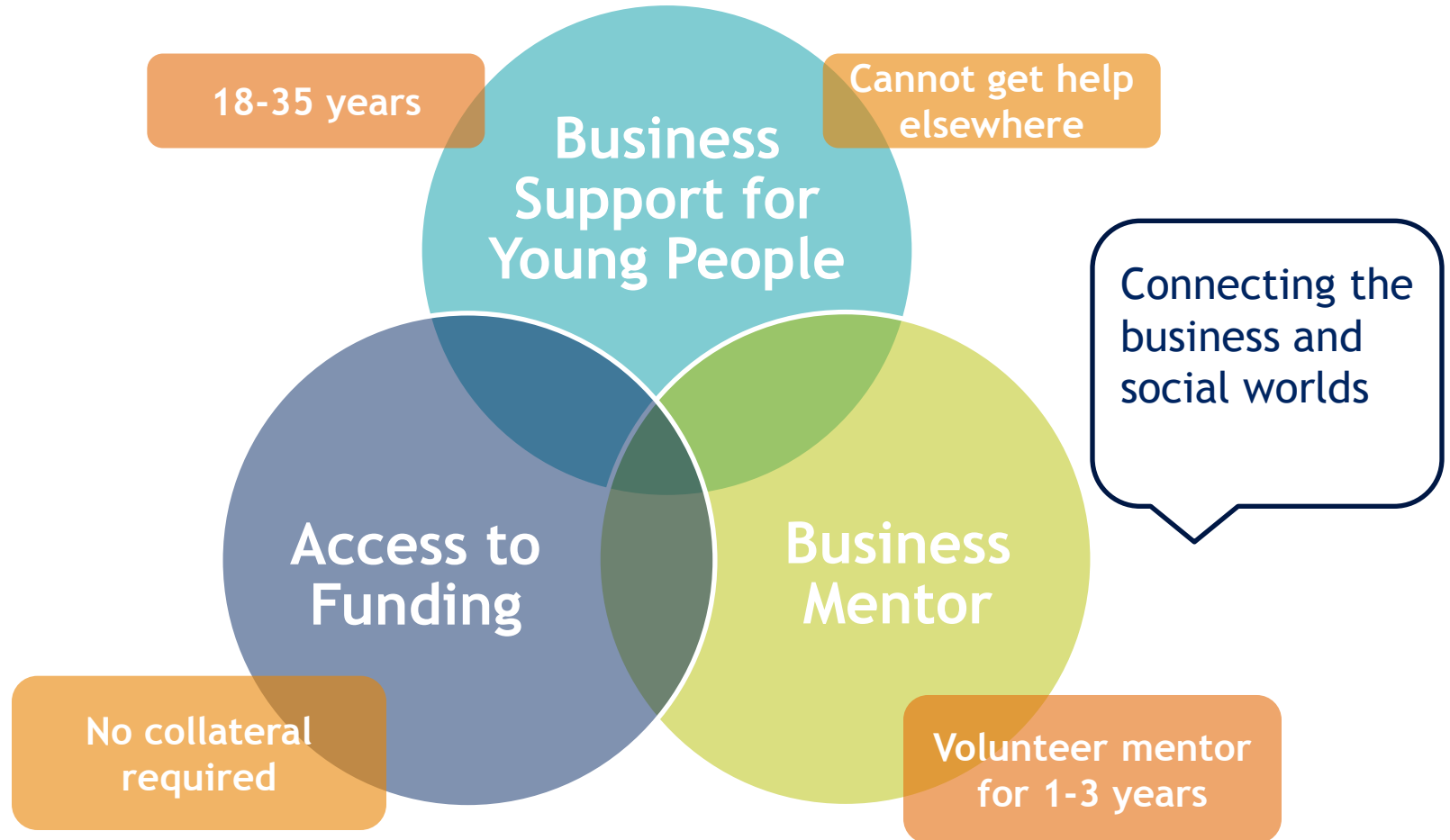


YBI - a global network



36 countries, locally rooted and locally led
Shared values, shared purpose, shared approach

The YBI Integrated Support Model



YBI Scale and Impact in 2011

7,709



YOUTH LED
BUSINESSES

15,000+



VOLUNTEER
BUSINESS
MENTORS

\$72 M



COLLATERAL
FREE LOANS

25,000

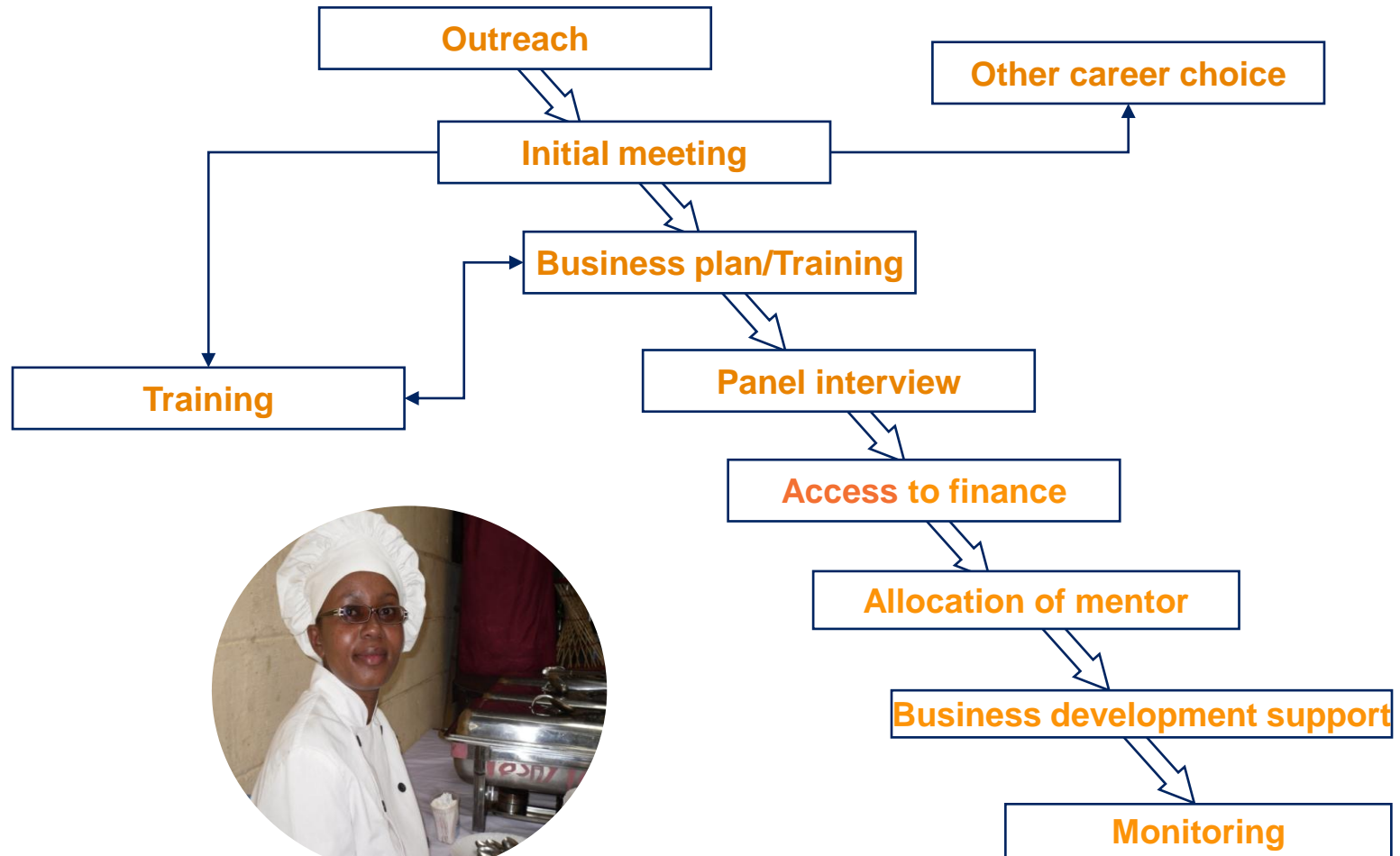


NEW
JOBS IN
NEXT 3
YEARS



YBI : A typical process flow

Implementation of YBI initiatives varies in different locations but a typical process flow is as follows:



Entrepreneur of the Year Finalist 2008 Elijah Daramola, Nigeria



Entrepreneur of the Year Finalist 2011

Haya Funyamin, India



YBI can bring...

- Global knowledge and expertise
- International resources and platforms
- Leading-edge technology
- Quality assurance



YBI's Knowledge Agenda: 3 pillars

MEL offering

Assessing the impact of YBI members

Key question:

What is the most effective support to help underserved young entrepreneurs start and grow a business?

Performance & Learning

Assessing the relevance & effectiveness of network team initiatives

Key question:

What is the added value of working collaboratively as a network?

Global research initiatives

Understanding strategic challenges and challenging operating assumptions

Key question:

What drives YBI growth?

YBI Global Research in 2013

1. **Joint venture with Global Entrepreneurship Monitor (GEM) to focus on youth**
 - First (Pilot) study due April 2013, 47 countries expected to participate
2. **Contexts Framework (DfID funded joint project with Restless Development and WarChild-UK)**
 - Sharing learning from one context to another presents opportunities in particular within a network organisation. Without a systematic approach to defining context, impact will be restricted and knowledge cannot be reliably transferred.
 - Proposed framework for assessing different youth interventions launched for consultation at Making Cents 2012. Am to revise the framework in light of submissions and test further
3. **Long-term outcomes study (DfID joint project with RD and WC-UK)**
 - Rigorous assessment of impact depends on being able to monitor and evaluate over the long-term - the full impact of youth interventions in particular will only be realised if impact evaluation continues over an extended period into adult life.
 - This project scopes recommended approaches for YBI in the evaluation of long-term impact
4. **Youth entrepreneurship standards (ANDE)**
 - Project to develop industry standards for effective practice in youth entrepreneurship programming
 - Will inform YBI's accreditation process
5. **Global Young Entrepreneurs Survey**
 - Repeat, expand and enhance 2011 survey (1,021 entrepreneurs across 21 countries)

Our President

“The simple fact is that, given the right level of support, young entrepreneurs are able to transform not only their lives, but also the lives of those around them”

His Royal Highness The Prince of Wales

